



Design Document

V4.1

5/7/2015

JUDGE FROG

Revision History

Version	Changes	Edited
1.0	<ul style="list-style-type: none"> Initial Draft 	November 25, 2014
1.1	<ul style="list-style-type: none"> Database Schema Updated Modified Development Environment 	January 16, 2015
2.0	<ul style="list-style-type: none"> Updated Prototypes Updated Database schema 	February 15, 2015
2.1	<ul style="list-style-type: none"> Updated Glossary of Terms Updated Prototypes Updated Database description 	February 16, 2015
2.2	<ul style="list-style-type: none"> Database Hierarchy Model Added Database Table Descriptions Updated Data Flow Model Added 	February 19, 2015
3.0	<ul style="list-style-type: none"> Updated database tables, prototypes, glossary 	April 26, 2015
4.0	<ul style="list-style-type: none"> Fixed fonts Changed Database section 	May, 4 2015
4.1	<ul style="list-style-type: none"> Fixed fonts again Fixed Table of Contents 	May 7, 2015

Revision Sign-Off

By signing the following, the team member is stating that he has read the entire document and has concluded that the information contained within this document is accurate, relevant to the project, and void of errors.

Name	Signature	Date Signed
Brice Boula		
Collin Duncan		
David Tomlinson		
Landon Westrom		

Table of Contents

Revision History **ii**

Revision Sign-Off **iii**

Table of Contents **iv**

1. Introduction..... **1**

 1.1 Purpose..... 1

 1.2 Project Background..... 1

 1.3 Section Overview 1

2. Design Constraints **2**

 2.1 Assumptions and Dependencies..... 2

 2.2 General Constraints..... 2

 2.3 Development Environment 3

3. Data Flow **4**

 3.1 Database 5

 3.2 Web Application 5

4. Database Design **6**

 4.1 Database Tables 7

5. UML Models..... **12**

 5.1 Sequence Diagrams..... 12

 5.1.1 Admin Create Sequence..... 12

 5.1.2 Admin Edit Sequence..... 13

 5.1.3 Admin Delete Sequence..... 14

 5.1.4 Admin Uploads Sequence 15

6. User Interface Prototype **16**

 6.1 Search Interface..... 16

 6.2 Analyze 17

 6.3 Admin Panel..... 18

7. Glossary of Terms **25**

1. Introduction

1.1 Purpose

This document provides a complete description of the Judge Frog system design. Included in this document are design constraints, system architecture, user interface design, and Unified Modeling Language (UML) diagrams (state, class, and sequence).

1.2 Project Background

Judge Frog is designed to be a fully functional web application with a user-friendly user interface. The application shall provide an efficient database containing significant human trafficking data inserted by the client. The end user shall be presented with visual graphs and charts to sort and analyze the data using various filters. Concluding the user's data analysis, the user shall have the option of exporting the visual data.

1.3 Section Overview

Section 2 – Design Constraints: Describes assumptions and dependencies, general constraints, and developmental methods for the Judge Frog web application.

Section 3 – System Architecture: Displays a model of the architecture and major component descriptions.

Section 4 – Database Design: Models the design of the database and describes the attributes of each table in the database.

Section 5 – UML Models: Displays the state, class and sequence diagrams.

Section 6 – User Interface: Gives screenshots from the prototype of the smartphone application.

Section 7 – Glossary of Terms: Defines technical and project-specific terms used in this document.

2. Design Constraints

2.1 Assumptions and Dependencies

The Judge Frog Web application will assume the following:

- The user shall access the Web application from a desktop computer
- The user can use the Web application after instruction

2.2 General Constraints

- Time
 - Development must be completed by the end of the school year in May 2015.
- Data storage
 - Finite amount of storage space on server used for storage
- Communication
 - Requires continuous Internet access to use the application
- Browser
 - Internet Explorer version 9 or higher
 - Google Chrome version 40 or higher
 - Mozilla Firefox version 33 or higher
 - Safari version 5 or higher

2.3 Development Environment

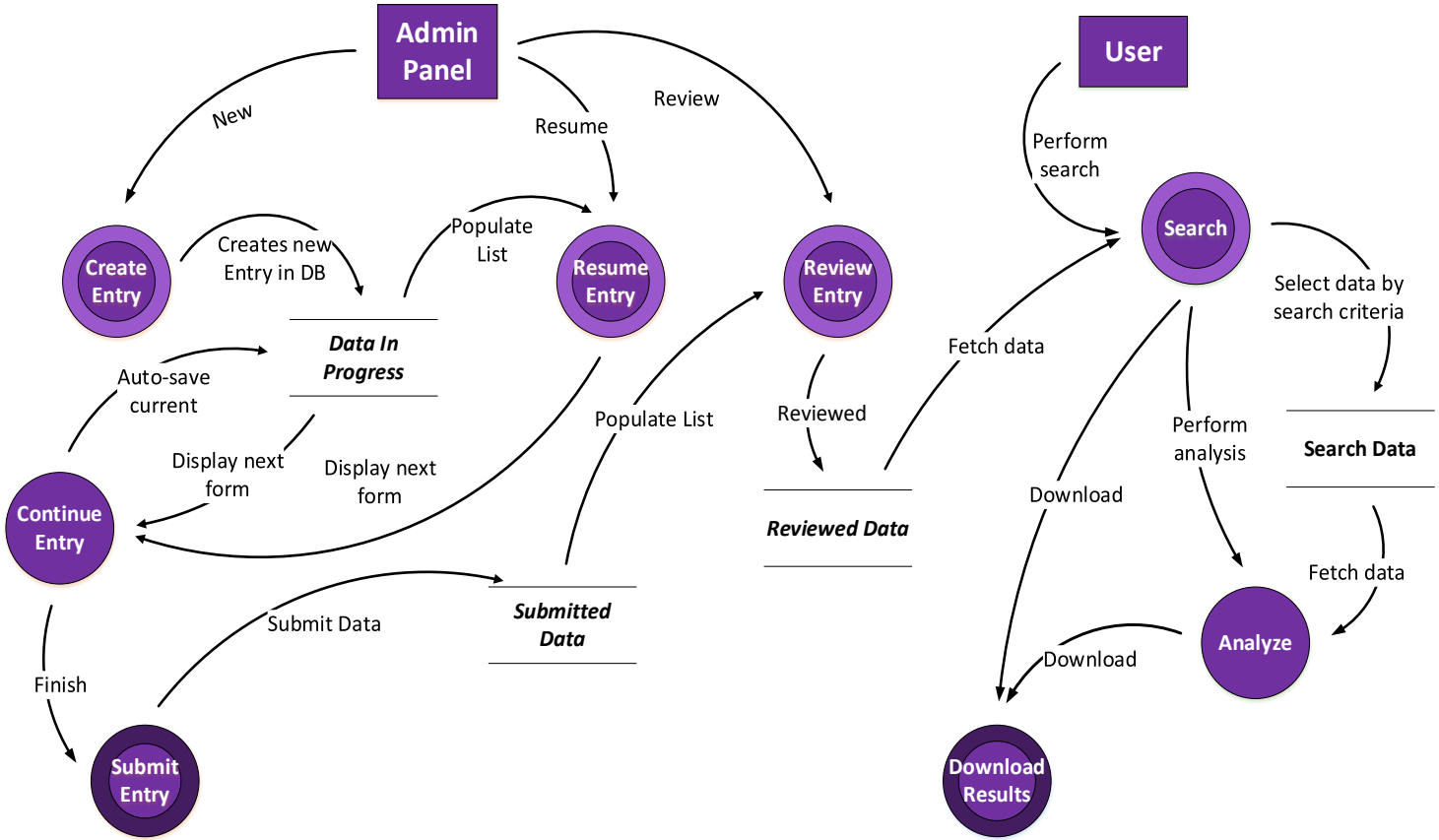
Programming Utilities

- MySQLWorkbench 6.2 CE
- PHP 5.5
- CakePHP 2.5.1
- GitHub
- phpMyAdmin 4.0.4.2
- MySQL 5.6.14
- Apache 2.2
- Bootstrap 3.1.1

General Utilities

- Microsoft Word
- Microsoft PowerPoint
- Google Drive
- Notepad++ 6.7.4
- Sublime Text Editor 2
- CoreFTP 2.2

3. Data Flow



3.1 Database

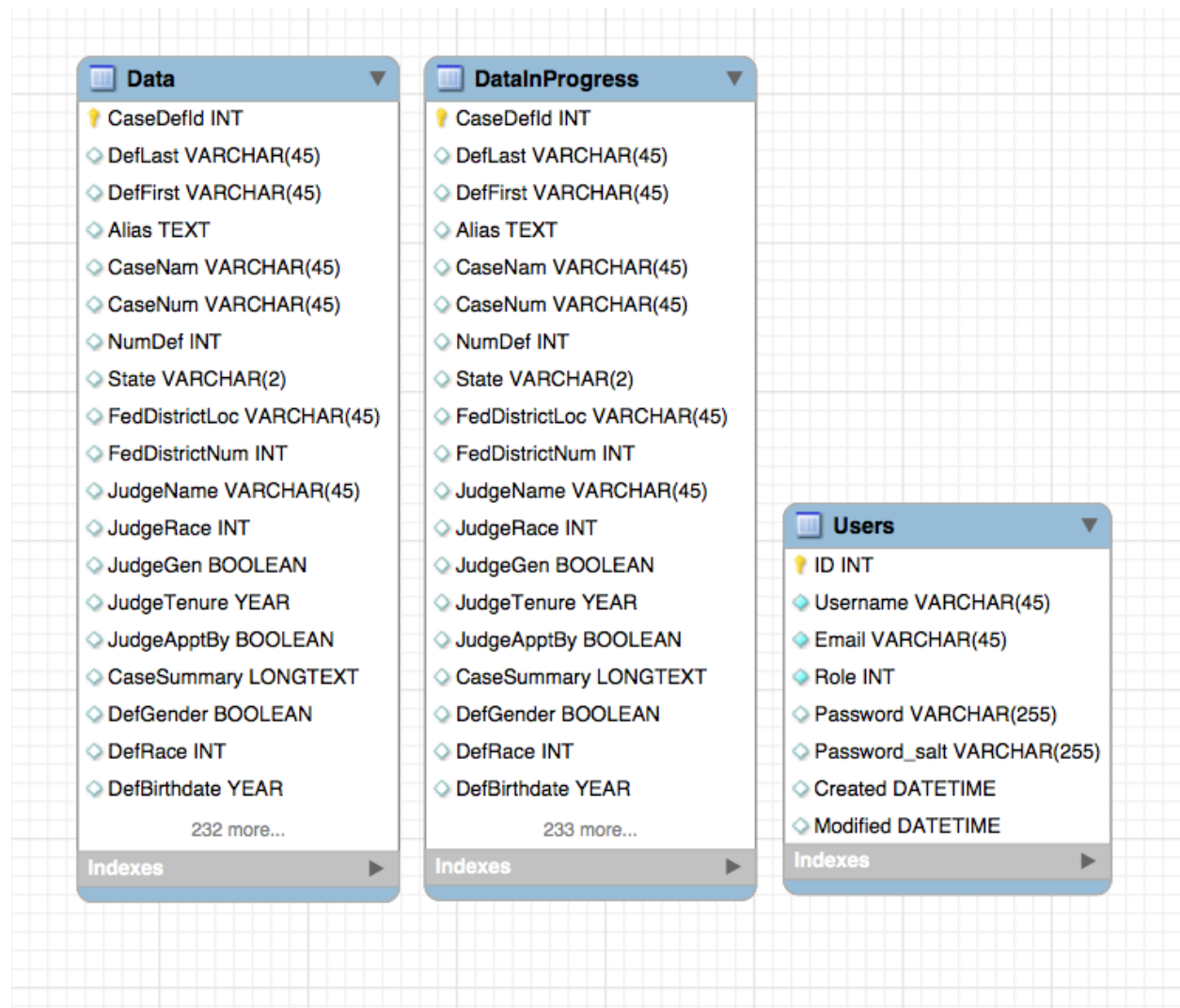
Our database stores human trafficking data collected by the National Institute of Justice. The well-designed database is stored on our server to be interacted with the web application. The database is developed with the Extended Entity-Relationship model using MySQL Workbench.

3.2 Web Application

The developed Web application connects to the database to insert and retrieve human trafficking data to create analysis for the user. The Web application provides a detailed tutorial on the functionality and navigation present in the application. There is a separate portal for administrative access to database functions.

4. Database Design

The diagram below shows a screenshot of the MySQL workbench as it views the models. Below this is a description of all of the columns included in the models for reference.



4.1 Database Tables

The **schema** for the **MySQL database** used in the current version of this project will be represented below in a table showing the: **name**, **type**, **attributes**, **default**, and **description** of each **column** for each **table** in the **database**. The **attributes** column will contain abbreviations which correspond to **MySQL Workbench** abbreviations: **PK** is **primary key**; **NN** is **not null**, **UQ** is **unique**, **BIN** is **binary**, **UN** is **unsigned**, **ZF** is **zero-fill**, **AI** is **auto-increment** (<http://dev.mysql.com/doc/workbench/en/wb-table-editor-columns-tab.html>).

Users table:

Name	Type	Attributes	Default	Description
Id	INTEGER	PK, NN, UQ, AI		ID given to each user to uniquely identify them.
Username	VARCHAR(45)	NN, UQ		Username for the given user.
Email	VARCHAR(45)	NN		Email address for the given user.
Role	VARCHAR(16)	NN	'ra'	The role of the given user. The value 'admin' gives the user administrative permissions and any other value gives them research assistant permissions.
Password	VARCHAR(255)	NN		Salted and hashed password for the given user.
Created	DATETIME			Timestamp of when the user was created.
Modified	DATETIME		Null	Timestamp of when the user was modified.
First_name	VARCHAR(45)			First name of the user.
Last_name	VARCHAR(45)			Last name of the user.

Data table:

The value '[statute]' in the **Data** table represents a value for one of the recognized statutes within our application. These statutes are: 1961 – 1968, 1028, 1351, 1425, 1512, 1546, 1581 – 1588, 1589, 1590, 1591, 1592, 2252, 2260, 2421 – 2424, 1324, and 1328. They are also listed in more detail on our website: <http://humantraffickingdata.org/description> (under Statutes tab).

Name	Type	Attributes	Description
Id	INTEGER	PK, NN, AI	ID given to each record to uniquely identify it.
Author	VARCHAR(45)	NN	User who published this record.
Created	DATETIME		Timestamp of when the record was published.
Modified	DATETIME		Timestamp of when the record was last modified.
CaseDefId	INTEGER		
CaseNam	VARCHAR(45)		The official name of the case.
CaseNum	VARCHAR(45)		The official number of the case.
NumDef	INTEGER		The total number of defendants in this case.
State	VARCHAR(2)		The state in which the case was held.
FedDistrictLoc	VARCHAR(45)		The location within the federal district (North, Central, South, etc.)
FedDistrictNum	INTEGER		The number of the federal district where this case was located (1-13).
JudgeName	VARCHAR(45)		The name of the last judge involved in the case.
JudgeRace	INTEGER		The race of the last judge involved in the case. The values are as defined: 0 is white; 1 is black; 2 is Hispanic; 3 is Asian; 4 is Indian.
JudgeGen	BOOLEAN		The gender of the last judge involved in the case. True corresponds with female and false corresponds with male.
JudgeTenure	YEAR		The tenure of the last judge involved in the case.
JudgeApptBy	BOOLEAN		The political party who appointed the judge. True corresponds with Democrat and false corresponds with Republican.
CaseSummary	LONGTEXT		A summary of the case.
DefLast	VARCHAR(45)	NN	The last name of this defendant.
DefFirst	VARCHAR(45)	NN	The first name of this defendant.
Alias	TEXT		A list of aliases of the defendant separated by ';'.
DefGender	BOOLEAN		The gender of the defender. True

			designates female and false designates male.
DefRace	INTEGER		The race of the defendant. 0 represents white; 1 represents black; 2 represents Hispanic; 3 represents Asian; 4 represents other.
DefBirthdate	YEAR	NN	The year of the defendant's birth.
DefArrestAge	INTEGER		The age at arrest of the defendant.
ChargeDate	DATE		The date the defendant was charged.
ArrestDate	DATE		The date the defendant was arrested.
Detained	BOOLEAN		Value representing whether defendant was detained.
BailType	INTEGER		The type of bail given to defendant. 0 represents none, 1 represents surety, 2 represents non-surety.
BailAmount	DOUBLE		The amount of bail to be paid by the defendant.
LaborTraf	BOOLEAN		Value representing whether this case contained labor trafficking charges.
AdultSexTraf	BOOLEAN		Value representing whether this case contained adult sex trafficking charges.
MinorSexTraf	BOOLEAN		Value representing whether this case contained minor sex trafficking charges.
FelCharged	INTEGER		The total number of felonies charged against the defendant.
FelSentenced	INTEGER		The total number of felonies sentenced against the defendants.
S[statute]	BOOLEAN		Value representing whether this particular statute, [statute], was charged in the given case for this defendant.
Counts[statute]	INTEGER		Number of counts charged against defendant for this particular statute.
CountsNP[statute]	INTEGER		Number of counts nolle prossed for this defendant for this particular statute.
PleaDismissed[statute]	INTEGER		Number of pleas dismissed for this defendant for this particular statute.
PleaGuilty[statute]	INTEGER		Number of times plead guilty for this defendant for this particular statute.
TrialGuilty[statute]	INTEGER		Number of trials found guilty for this defendant for this particular statute.
TrialNG[statute]	INTEGER		Number of trials found not guilty for this defendant for this particular statute.
Fines[statute]	INTEGER		Amount of fines levied against defendant for this particular statute.
Sent[statute]	INTEGER		Number of months sentenced against this defendant for this particular statute.
Prob[statute]	INTEGER		Number of months of probation required for this defendant for this particular statute.

DateTerm	DATE		The date when the sentence was terminated.
SentDate	DATE		The date when the sentencing began.
TotalSentence	INTEGER		The total number of months sentenced for this defendant.
Restitution	DOUBLE		The amount of restitution required to pay by the defendant.
AssetForfeit	BOOLEAN		Value representing whether the defendant had to forfeit various assets.
SupRelease	BOOLEAN		Value representing whether the defendant had supervised release.
Probation	INTEGER		The total number of months of probation required by this defendant.
NumVic	INTEGER		Total number of victims involved in this case.
NumVicMinor	INTEGER		Total number of minor victims involved in this case.
NumVicForeign	INTEGER		Total number of foreign victims involved in this case.
NumVicFemale	INTEGER		Total number of female victims involved in this case.
OCName1	VARCHAR(45)		The name of the first organized crime group that this defendant was involved in.
OCType1	INTEGER		The size of the first organized crime group that this defendant was involved in. 1 represents 'Mom & Pop', 2 represents 'Street Gang', 3 represents 'Cartel/Syndicate/Mafia', 5 represents 'Prison Gang', 6 represents 'Other'.
OCRace1	INTEGER		The race of the first organized crime group that this defendant was involved in. 0 represents 'None', 1 represents 'Black', 2 represents 'White', 3 represents 'Hispanic', 4 represents 'Asian', 5 represents 'Other'.
OCScope1	INTEGER		The scope of the first organized crime group that this defendant was involved in. 0 represents 'Other', 1 represents 'Local Only', 2 represents 'Trans-State', 3 represents 'Trans-National'.
OCName2	VARCHAR(45)		The name of the second organized crime group that this defendant was involved in. 1 represents 'Mom & Pop', 2 represents 'Street Gang', 3 represents 'Cartel/Syndicate/Mafia', 5 represents 'Prison Gang', 6 represents 'Other'.
OCType2	INTEGER		The race of the second organized crime group that this defendant was involved

			in. 0 represents 'None', 1 represents 'Black', 2 represents 'White', 3 represents 'Hispanic', 4 represents 'Asian', 5 represents 'Other'.
OCRace2	INTEGER		The scope of the second organized crime group that this defendant was involved in. 0 represents 'Other', 1 represents 'Local Only', 2 represents 'Trans-State', 3 represents 'Trans-National'.
OCScope2	INTEGER		The size of the second organized crime group that this defendant was involved in. 1 represents 'Mom & Pop', 2 represents 'Street Gang', 3 represents 'Cartel/Syndicate/Mafia', 5 represents 'Prison Gang', 6 represents 'Other'.

DataInProgress table:

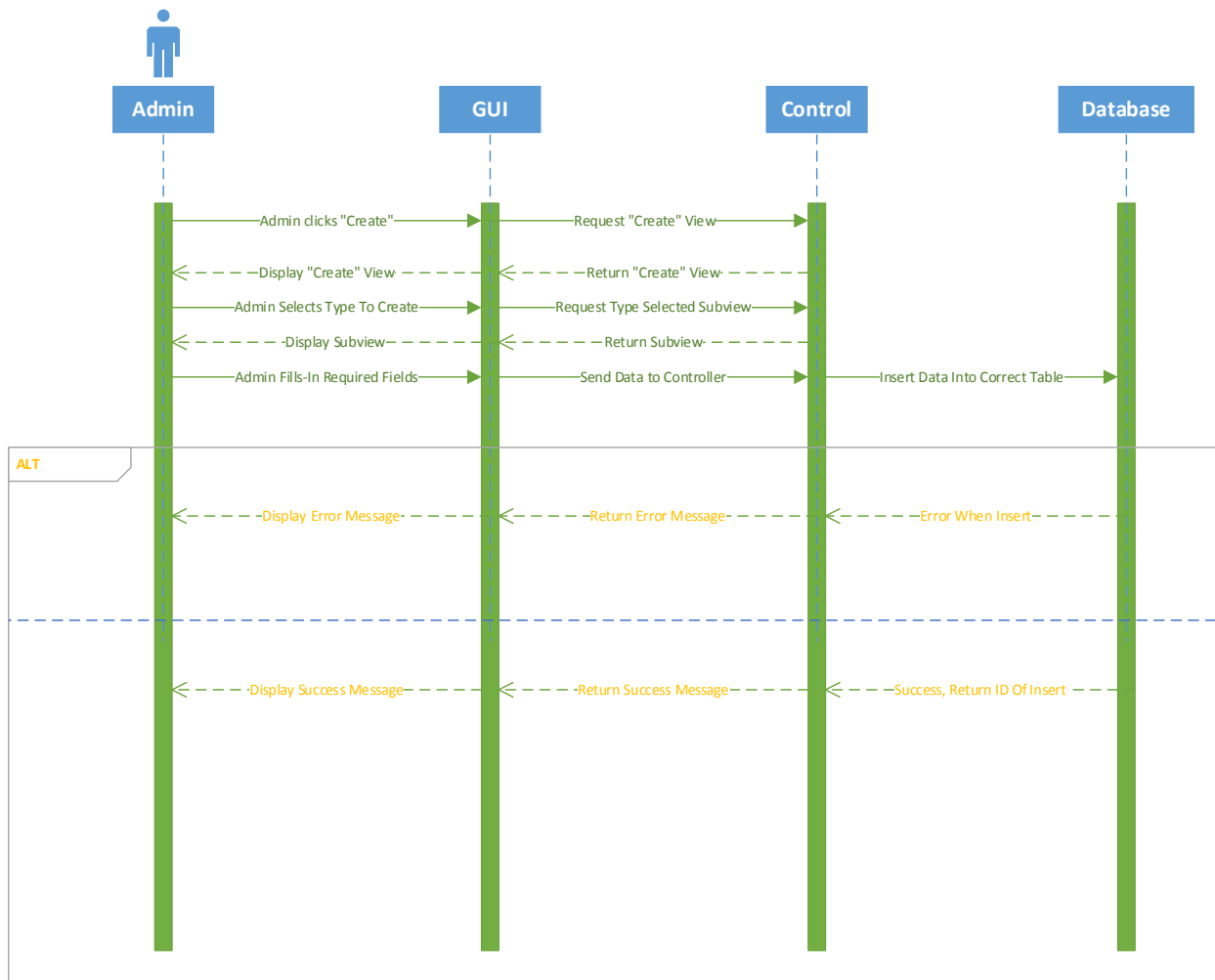
The **DataInProgress** table features exactly the same information as the **Data** table. However, our client wanted to separate the data into two tables with one being for finalized information and one being for information still in progress. The only additional field in **DataInProgress** is:

Name	Type	Description
SubmittedForReview	BOOLEAN	If true, this case will be displayed for administrators to publish to Data . If false, the case is still being revised.

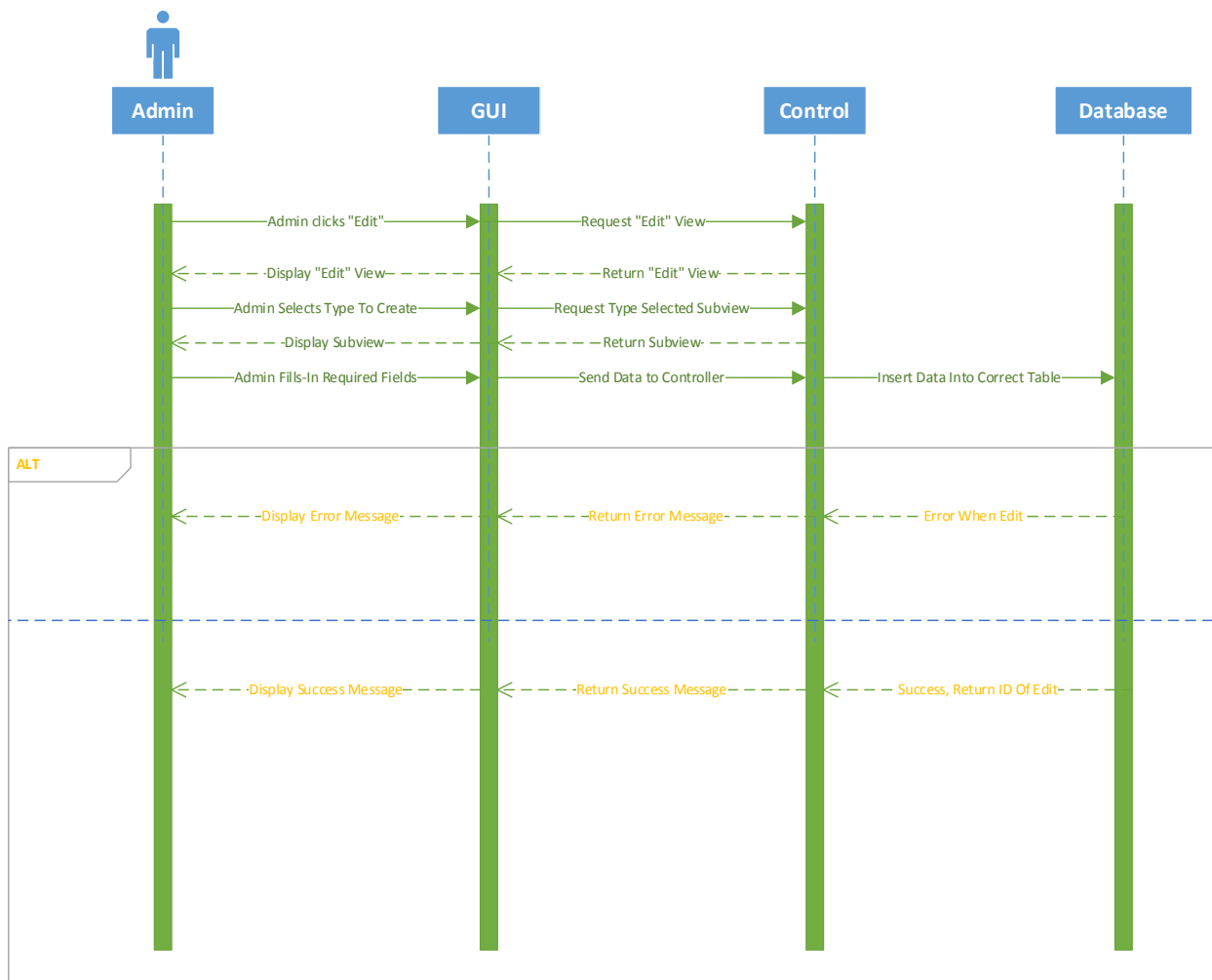
5. UML Models

5.1 Sequence Diagrams

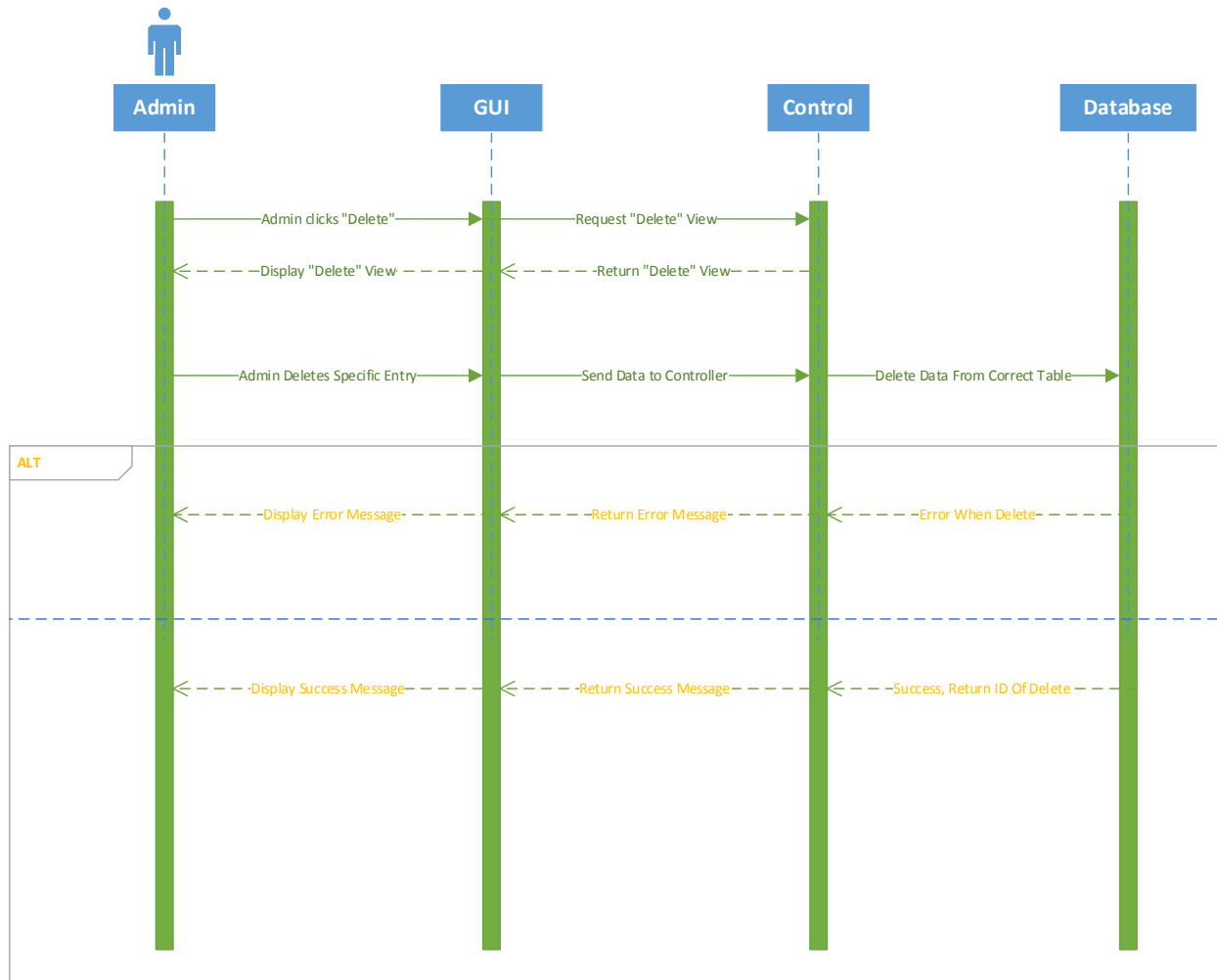
5.1.1 Admin Create Sequence



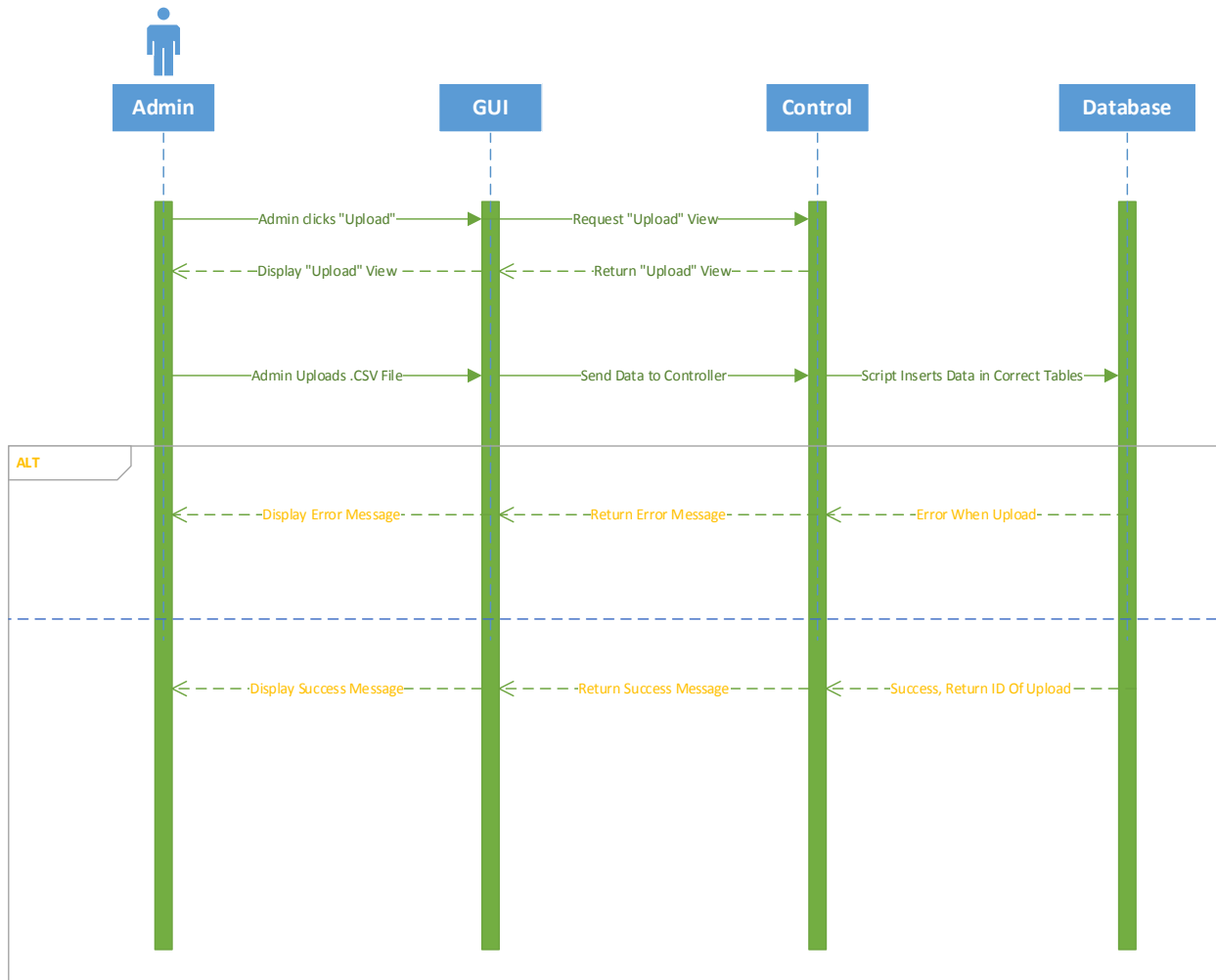
5.1.2 Admin Edit Sequence



5.1.3 Admin Delete Sequence



5.1.4 Admin Uploads Sequence



6. User Interface Prototype

6.1 Search Interface

SEARCH BY

- Case +
- Type of Trafficking +
- Defendant +
- Judge +
- Organized Crime Group +
- Victims +
- Arrest Details +
- Charge Details +
- Sentencing Details +

SEARCH DASHBOARD

Case Name	Case Number	Year	Type of Case	# of Defendants
USA v. Bell et al	5:12-cr-00057-VAP	2012	AM	8
USA v. Hill	5:05-cr-00111-L	2005	AM	1
USA v. Ding et al	4:09-CR-00573-SBA	2009	L	3
USA v. Monsalve	4:07-cr-00056-RH-CAS	2007	A	6
USA v. Mondragon et al	4:05-cr-00468	2005	L	8
USA v. Evans	4:00-cr-00003-JCH	2000	AM	15
USA v. Pittman et al	3:13-cr-04510-JAH	2013	AM	24
USA v. Maldonado	3:07-cr-005556-BHS-1	2007	L	1
USA v. Leon-Aldana et al	3:07-cr-00035-L	2007	L	4
USA v. Davis et al	3:07-cr-00011-JCH-1	2007	AM	2
USA v. Farquharson	3:06-cr-00126-MOC-DSC-1	2006	L	1
USA v. Paris et al	3:06-cr-00064-CFD	2006	AM	10
USA v. Howard	32-31:35-q	2007	LM	1
USA v. Veerapol	2:98-cr-00334-CM-1	1998	L	1
USA v. Weston	2:13-cr-00025-CMR	2013	LAM	5
USA v. Afolabi et al	2:07-cr-00785-JLL	2007	LM	4
USA v. McGlover	2:06-cr-00393-JLR	2006	M	3
USA v. Djoumessi et al	2:05-cr-80110-AJT-MKM-1	2005	LM	2
USA v. Mesfun et al	2:05-cr-00858-WHW	2005	L	2
USA v. Zavala et al	2:04-CR-00962-SJF-1	2004	L	2

Prev Next 1 2

SEARCH BY

Case -

Name (e.g. USA v. Jones)

Number (e.g. 00-cu-)

Number of Defendants

0

100+

0255075100

State▾

Federal District▾

Case Details
All Results

Case Basic Information

Case Name	Case Number	# Defendants	State	Federal District	Year
USA v. Bell et al	5:12-cr-00057-VAP	8	CA	9-Central	2012

Case Summary



Defendants, who were members of the Rolling 60s Crips Gang, recruited underage girls from Inland Empire schools and took them to areas in Compton and Lynwood where they were forced to engage in commercial sexual acts.

Victim Information

Total Victims	Total Minors	Total Foreigners	Total Females
7	6	0	7

Judge Information


6.2 Analyze

ANALYZE BY   ANALYSIS DASHBOARD

1. Choose A Graph -

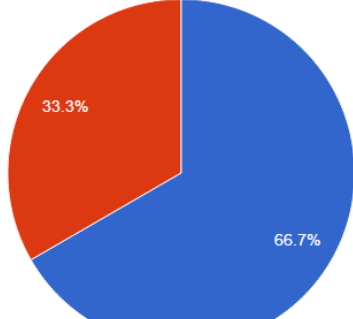
- Bar Graph
- Line Graph
- Histogram
- Pie Chart
- Geo Chart

2. Customize -

Year 

3. Search Parameters +

Year



■ 2006
■ 2007

Year	Percentage
2006	66.7%
2007	33.3%

6.3 Admin Panel

Admin Login

User Name

Password

Login

1. Will direct user to begin adding case and defendant information. (Access: Super user and admin)
2. Allows admin to review and submit super user's case creation that has been submitted for approval (Access: admin)
3. Allows user to modify and update previous case data in database (Access: Super User and admin)
- To be discussed
4. Allows user to resume from a previous state that they had saved their session within a data entry screen. (Access: Super User and admin)
- To be discussed

Admin Selection

Add Case/Defendant 1

Review/Submit 2

Update Data 3

Resume 4

1. User can add a new judge and will be directed to a new screen.

2. User will be directed to previous page.

3. User will be directed to next page.

Case Information

Case Name

Case Number

Summary

Number of Defendants

1 + Judge

Federal District

State

2 Back 3 Next

1. User can save their current session and data that has been entered is stored in database that can be retrieved later.

2. Saves the judge information the user entered.

New Judge

Name

Race

Gender

Tenure

Appointed By

1 Save & Quit

Cancel

2 Add

Trafficking & Victim Information

Type of Trafficking

Adult Trafficking

Labor Trafficking

Minor Trafficking

Total Victims

Female Victims

Foreigner Victims

Minor Victims

Save & Quit

Back

Next

1. Displays the current case that the user will be inserting defendant information for.

2. Displays which defendant the user will be adding information for.

Defendant

1 Case Name 2 Defendant Number

First Name

Last Name

Gender

Birth Date

Race

Alias

Save & Quit Back Next

Arrest and Charge Details

Case Name Defendant Number

Defendant's Name

Charge Date

Arrest Date

Detained

Bail Type

Bail Amount

Felony Charge

Felony Sentenced

Save & Quit Back Next

Charges

Add Charge Details

Statute 1

Counts
Counts NolleProssed
Pleas Dismissed
Pleas Guilty
Trial Guilty
Trial Not Guilty
Fines
Sentence
Probation

Statute 2

Counts
Counts NolleProssed
Pleas Dismissed
Pleas Guilty
Trial Guilty
Trial Not Guilty
Fines
Sentence
Probation

Statute 3+

Save & Quit Back Next

Aggregate Sentence

Sentence Details For Defendant

Date Terminated

Date

Total Months

Restitution

Asset Forfeit

Appeal

Supervised Release

Probation

Save & Quit

Next

1. User will have the option to choose review or Enter information for next defendant. If there are more defendants defendant button will display. If there are no other defendants then review button will display.

Organized Crime Group

Name

Type

Scope

Race

Nationality

Review

Save & Quit

Enter Next Defendant

Submitted For Approval

Case Information

Trafficking & Victim Information

Defendant

Arrest Charge Details

Charges

Aggregate Sentence

Organized Crime Group

7. Glossary of Terms

Administrator – Privileged user capable of performing major changes to database.

Application – Group of programs designed to supply an end-user with expected functionality.

CakePHP – A free, open-source, rapid development framework for PHP.

Control Panel – An interface specifically designed to allow administrators to easily perform their tasks.

CRUD – Create, read, update, delete operations that query database.

Database – A structured set of data held in a computer, accessible in various ways.

Deliverable – A product, not necessarily finished, related to the project given to the client.

End-User – A person or persons who will be using the web application for the specified purpose of our project.

Foreign Key – A field in one table that uniquely identifies a row of another table.

GitHub – A Web service for software version control.

Host – A website on a server accessible over the Internet.

Milestone – A point at which project progress can be assessed.

PHP – A general-purpose scripting language that is especially suited to server-side web development.

Primary Key – Uniquely identifies each record in the table.

Prototype – Simulates only a few aspects of, and may be completely different from, the final product.

TCU – Texas Christian University

UML – Unified Modeling Language; a modeling language designed to provide a standard way to visualize the design of a system.

Walk-through – Points during the project where the team describes significant project components with clients and individuals within the team.

Web Application – Application that is accessed by visiting a specific URL.